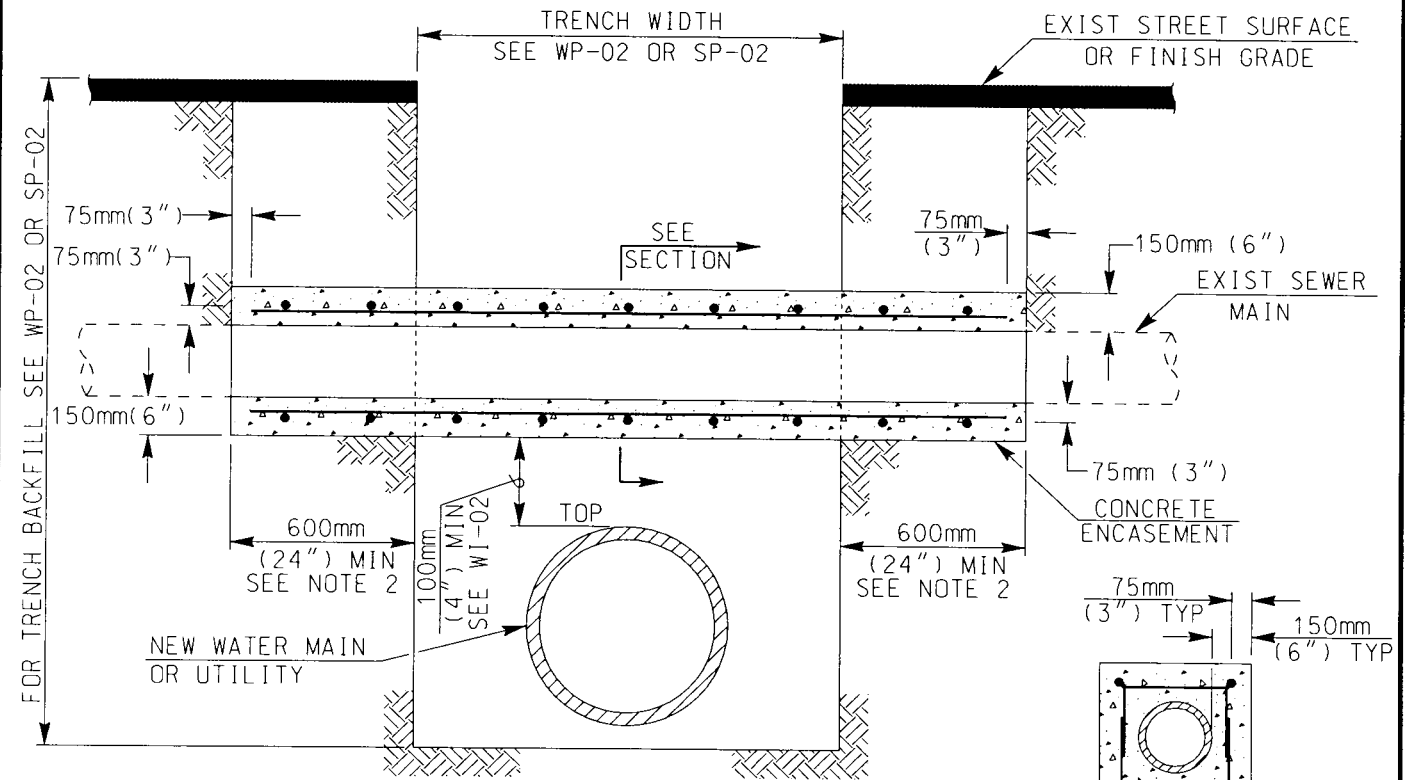


PLAN



ELEVATION

ENCASEMENT SECTION

NOTE:

- 1) REFER TO SECTION 01000 OF SPECIFICATIONS FOR PROTECTION OF EXISTING FACILITIES
- 2) ENCASEMENT SHALL EXTEND TO FIRST JOINT OR TO A DISTANCE OF 600mm (24") BEYOND BOTH SIDES OF TRENCH WHICHEVER IS GREATER
- 3) FOR PIPE BEDDING AND TRENCH BACKFILL SEE WP-02 OR SP-02

LEGEND ON PLANS

PIPE SUPPORT FOR UNDERCUT SEWER MAINS

WATER AGENCIES STANDARDS

COMMITTEE APPROVAL: 11/01/2002

DRAWING NUMBER: WP-09