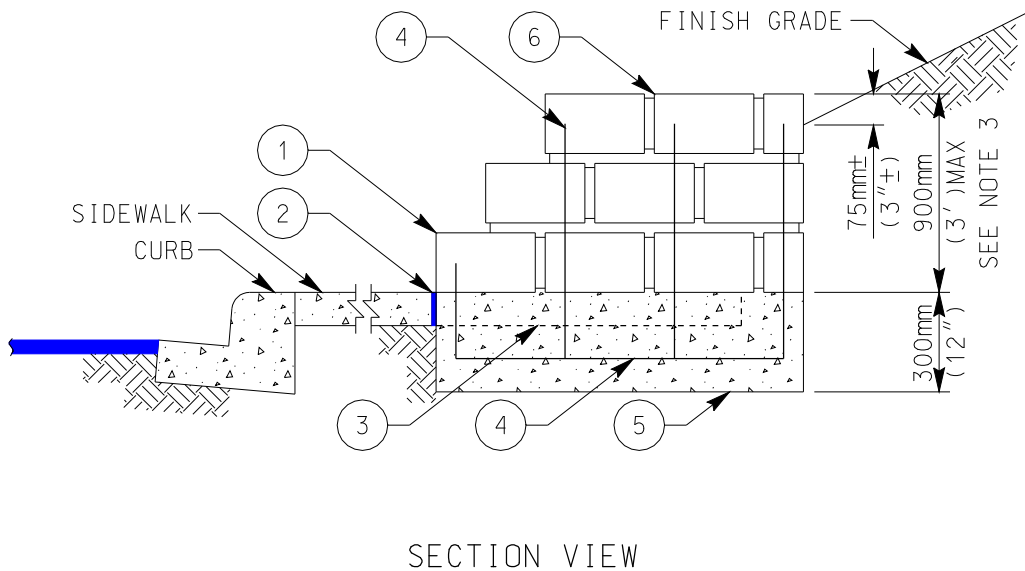
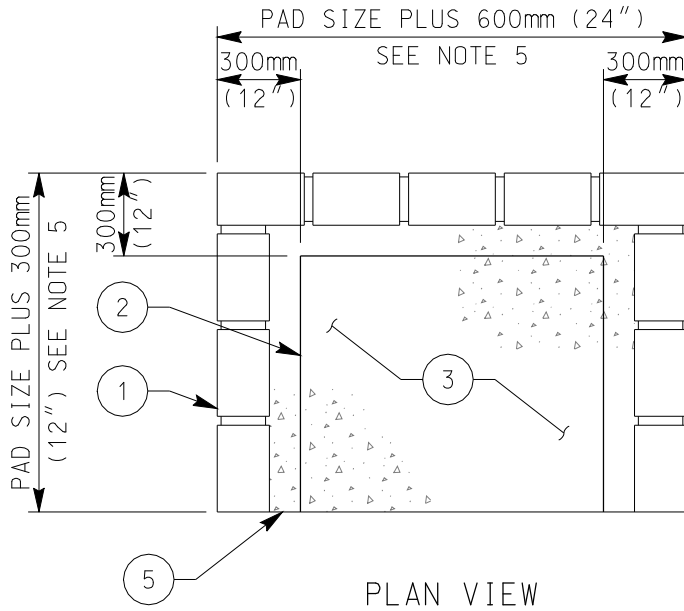


h:\WAS&WASDG\2008\WAS&WASDG09-12-08\WAS\StandardDrawings\Water\wm03-1_09-12-08.dgn
PEN TBL: k:\table\WASDETAL.PEN
25-SEP-2008 11:19 kgallo



FOR MATERIAL DESCRIPTIONS AND NOTES SEE WM-03 (2 OF 2)

LEGEND ON PLANS

RETAINING WALL FOR WATER AND
RECYCLED WATER APPURTENANCES

WATER AGENCIES STANDARDS

COMMITTEE APPROVAL: 09/12/2008

DRAWING NUMBER: WM-03 (1 OF 2)

FOR DRAWING OF RETAINING WALL SEE WM-03 (2 OF 2)

NOTES:

- 1) REFER TO SECTION 03000 OF THE SPECIFICATIONS
- 2) RETAINING WALLS FOR USE IN CONJUNCTION WITH THE INSTALLATION OF WATER APPURTENANCES SUCH AS AIR VALVES, WATER TEST STATIONS, AND OTHER APPURTENANCES SHALL BE INSTALLED WHERE SHOWN ON THE PLANS OR AS DIRECTED BY THE DISTRICT ENGINEER
- 3) FIGURES SHOWN REPRESENT MINIMUMS ONLY. ALL RETAINING WALLS ABOVE 900mm (3') SHALL BE DESIGNED BY THE ENGINEER OF WORK AND PERMITTED PER THE AGENCY OF JURISDICTION. ALSO REFER TO SAN DIEGO REGIONAL STANDARD DRAWINGS. FULL SUBMITTAL TO BE APPROVED BY THE DISTRICT ENGINEER PRIOR TO INSTALLATION
- 4) VERTICAL BARS TO BE INSTALLED AT 400mm (16") ON CENTER. INSTALL MINIMUM 1-BAR IN THE CENTER OF THE FOOTING FOR WALL
- 5) PAD SIZE TO MATCH SIZE OF PAD REQUIRED FOR APPURTENANCE TO BE INSTALLED
- 6) WALLS USED FOR FIRE HYDRANTS SHALL BE SIZED AND APPROVED BY THE FIRE AGENCY OF JURISDICTION PRIOR TO INSTALLATION
- 7) GRAVITY WALL MAY BE INSTALLED ONLY WITH PRIOR APPROVAL OF SUBMITTAL FOR INSTALLATION.
- 8) AN EASEMENT MAY BE REQUIRED DEPENDING ON LOCATION OF WALL

LEGEND ON PLANS

ITEM NO	SIZE AND DESCRIPTION	ITEM NO	SIZE AND DESCRIPTION
1	200mm x 200mm x 400mm (8" x 8" x 16") CONCRETE OR SLUMP BLOCK (SOLID GROUT ALL CELLS), SEE NOTE 7	4	#4 REBAR TYPICAL, SEE NOTE 4
		5	300mm x 300mm (12" x 12") CONCRETE FOOTING, SEE NOTE 7
2	COLD JOINT STRIP	6	CONCRETE CAP BLOCK, SEE NOTE 7
3	CONCRETE PAD, SEE NOTE 5		

RETAINING WALL FOR WATER AND RECYCLED WATER APPURTENANCES

WATER AGENCIES STANDARDS
 COMMITTEE APPROVAL: 09/12/2008
 DRAWING NUMBER: WM-03 (2 OF 2)