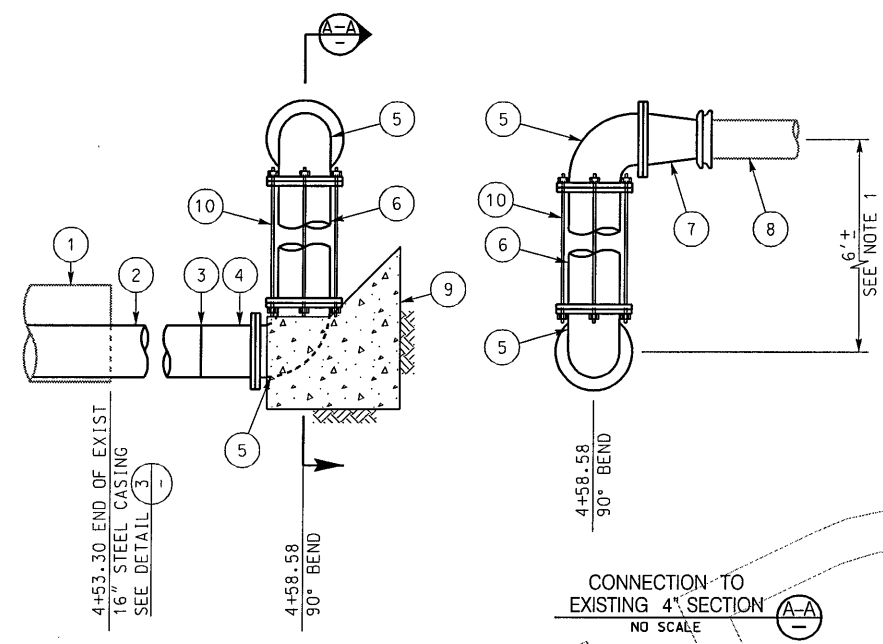


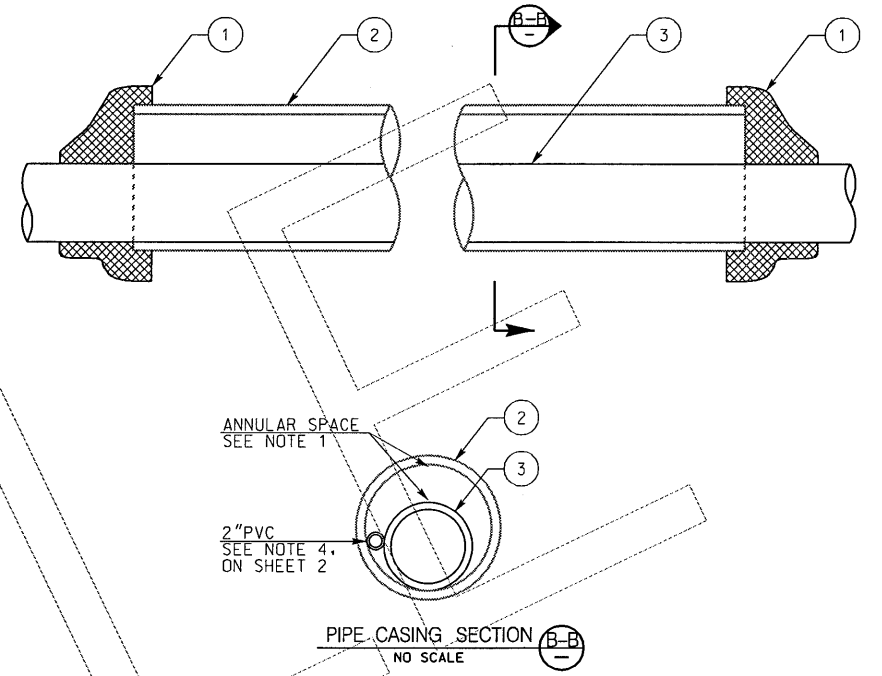
- NOTES:
- ITEMS 1, 2, & 3 ARE TO BE FURNISHED AND INSTALLED BY PADRE DAM MWD
 - THE EXISTING 30" CCP IS CALLED ACCP, DRAWING NUMBER W-19. SHOP DRAWINGS B0280-B3 & B0280-B3, ID= 30", OD= 33 1/16", 3/4" CONCRETE LINING, 31 1/8" OD 14 GAGE (5/32") STEEL CAN, 1/16" DIAMETER REINFORCING RODS AND A 1 3/16" CONCRETE COATING
 - ALL MECHANICAL JOINT FITTINGS SHALL BE INSTALLED WITH JOINT RESTRAINT SYSTEM
 - MATERIALS SHALL BE SELECTED FROM THE APPROVED MATERIALS LIST
 - AREA IDENTIFIED TO RECEIVE 95% RELATIVE COMPACTION IN THE PIPE ZONE

ITEM NO	DESCRIPTION	COMMENTS
1	30"x 8" TAPPING SLEEVE, 18" φ x 1/4" PLATE W/10" LONG 8" SCH 40 PIPE CML & EPOXY COATED WITH SLIP ON FLANGE	FURNISHED AND INSTALLED BY PDMWD
2	8" INSULATING FLANGE KIT	FURNISHED AND INSTALLED BY PDMWD
3	8" FLANGED RESILIENT WEDGE GATE VALVE	FURNISHED AND INSTALLED BY PDMWD
4	8" FLANGED x MECH JOINT ADAPTOR	2-EACH
5	8" PVC, CL150 WATERMAIN PIPE WITH WALL SLEEVE	LENGTH AS REQUIRED
6	CONCRETE ANCHOR BLOCK	SEE DETAIL "5" BELOW
7	8" x 2' FLG'D DUCTILE IRON SPOOL	W/WALL SLEEVE
8	8" (DIPS) HDPE, DR-17 WELD-ON FLANGE	1-EACH
9	ADAPTER W/ DUCTILE IRON BACK-UP RING	AS REQUIRED
10	FUSION WELDED JOINT, TYPICAL	AS REQUIRED
11	8" (DIPS) HDPS, DR-17 WATER MAIN	LENGTH AS REQUIRED
12	EXISTING 16" WELDED STEEL CASING	TO REMAIN, SEE DETAIL "3"
12	2" BLOWOFF PER STANDARD DRAWING WB-01	1-EACH



- NOTES:
- MECHANICAL JOINT FITTINGS NOT USED
 - MATERIALS SHALL BE SELECTED FROM THE APPROVED MATERIALS LIST

ITEM NO	DESCRIPTION	COMMENTS
1	EXISTING 16" WELDED STEEL CASING	TO REMAIN, SEE DETAIL "3"
2	8" (DIPS) HDPE, DR-17 WATER MAIN	LENGTH AS REQUIRED
3	FUSION WELDED JOINT, TYPICAL	AS REQUIRED
4	8" (DIPS) HDPE, DR-17 WELD-ON FLANGE	1-EACH
5	ADAPTER W/ DUCTILE IRON BACK-UP RING	2-EACH
6	8" (DIPS) FLANGE x FLANGE 90° BEND	2-EACH
7	8" FLG'D DUCTILE IRON PIPE WATER MAIN	LENGTH AS REQUIRED
8	8" x 4" FLANGE x MECH JOINT REDUCER	1-EACH, CONNECT TO EXISTING 4" PVC
9	EXISTING 4" PVC WATER MAIN	TO REMAIN
10	CONCRETE THRUST/ANCHOR BLOCK	AS REQ'D PER STD DWG WT-01 & SPEC SECTION 03000
10	ALL THREAD-STAINLESS STEEL SHACKLES	3 TOTAL



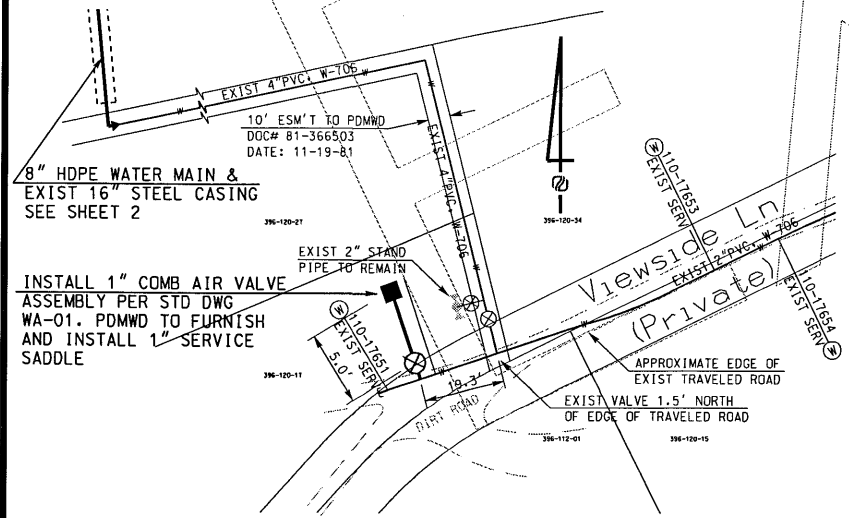
- NOTES:
- THE ANNULAR SPACE BETWEEN THE CARRIER PIPE AND THE CASING SHALL NOT BE FILLED WITH ANY MATERIAL
 - INSTALL WARNING/IDENTIFICATION TAPE & TRACER WIRE AS SHOWN ON STD DWG WP-01
 - MATERIALS SHALL BE SELECTED FROM THE APPROVED MATERIALS LIST

ITEM NO	DESCRIPTION	COMMENTS
1	CASING END SEAL	2-EACH
2	EXISTING 16" WELDED STEEL CASING	TO REMAIN
3	8" (DIPS) HDPS, DR-17 WATER MAIN	LENGTH AS REQUIRED
4	2" PVC HIGHLINE	SEE NOTE 4 ON SHEET 2

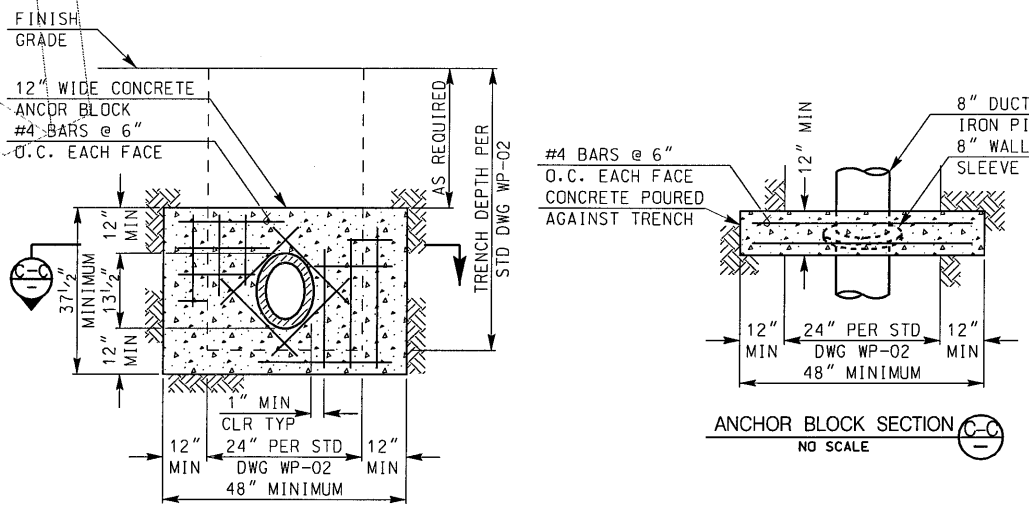
8" WETTAP CONNECTION TO 30" CCP DETAIL 1
NO SCALE

CONNECTION TO EXISTING 4" PVC DETAIL 2
NO SCALE

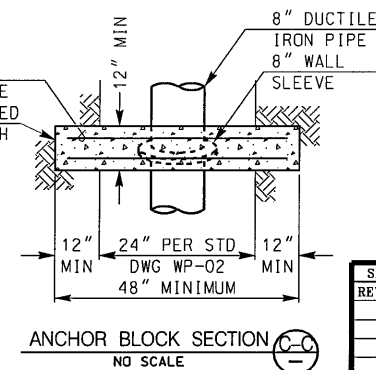
PIPE INSTALLATION IN EXISTING CASING DETAIL 3
NO SCALE



1" COMBINATION AIR VALVE ASSEMBLY DETAIL 4
NO SCALE



ANCHOR BLOCK DETAIL 5
NO SCALE



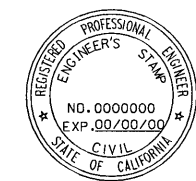
ANCHOR BLOCK SECTION 6
NO SCALE

- DRAWING REFERENCES:
- W-19 WB-01 WT-01
 - W-706 WP-01
 - WA-01 WP-02

SIGNATURE OF THESE PLANS IS NOT A COMMITMENT TO SERVE

REV	DATE	DESCRIPTION	BY	APPD

DESIGN BY: KG/SS SCALE: NONE
 DRAWN BY: KG CHECKED BY: _____
 SR CONSTRUCTION INSPECTOR REVIEW: _____ DIRECTOR OF OPERATIONS AND WATER QUALITY REVIEW: _____
 RECOMMENDED BY: SS



PADRE DAM MUNICIPAL WATER DISTRICT

VIEWSIDE LANE WATER MAIN REPLACEMENT DETAILS

DIRECTOR OF ENGINEERING AND PLANNING	DATE	98054 ESA
RCE #	EXP	JOB NO. ID
PLANS VALID FOR ONE YEAR FROM SIGNATURE	SHEET 3 OF 3	DRAWING NO. W-3375